

IDENTIFICATION	CODE
S0686	9075010


On board electronic control with thermostat for MV-ECM and MVR-ECM models.

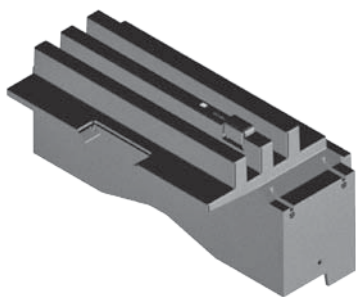
- Control with adjustable room thermostat 15-30°C, operating mode selection (ventilation, summer, winter, automatic) and installation program (minimum, maximum, night time and automatic), water temperature suitability control.
- Has an inlet for connecting presence sensor and two 230V outlets to control 2 solenoid valves.
- The low temperature cut-out is installed as per standard on the unit.

IDENTIFICATION	CODE
S0373	9075004


Wall mounted control (must be coupled to Slave control S0685).

- Wall mounted control to be coupled to board code S0685.
- Possibility of controlling up to 30 units.
- Selection of Max, Auto, Quiet and Night time modes.
- Temperature sensor.
- BUS type communication with the board.
- The control makes it possible to implement a loop up to 1 Km long; the cables must be shielded.
- The control is equipped with a 230/12 V power transformer.
- The low temperature cut-out is installed as per standard on the unit.

IDENTIFICATION	CODE
S0685	9075011


Slave electronic control for remote control of MV-ECM and MVR-ECM models (coupled to Master control: S0373).

- Can be installed on all CFR-ECM 2-pipe versions, the control has an LED indicating operating status and the presence of faults and a key for temporary isolation from the mains.
- The main operating parameters, the set point and the ambient temperature are transmitted by remote control S0373 to all the fan coils connected online, allowing for homogeneous operation.
- It has a 230V outlet for controlling a solenoid valve, two potential-free contacts to control a chiller or a boiler and one presence input.

IDENTIFICATION	CODE
S0633	9075013



Extension kit which must be used when moving water connections with consequent repositioning of control on the opposite side of the motor.